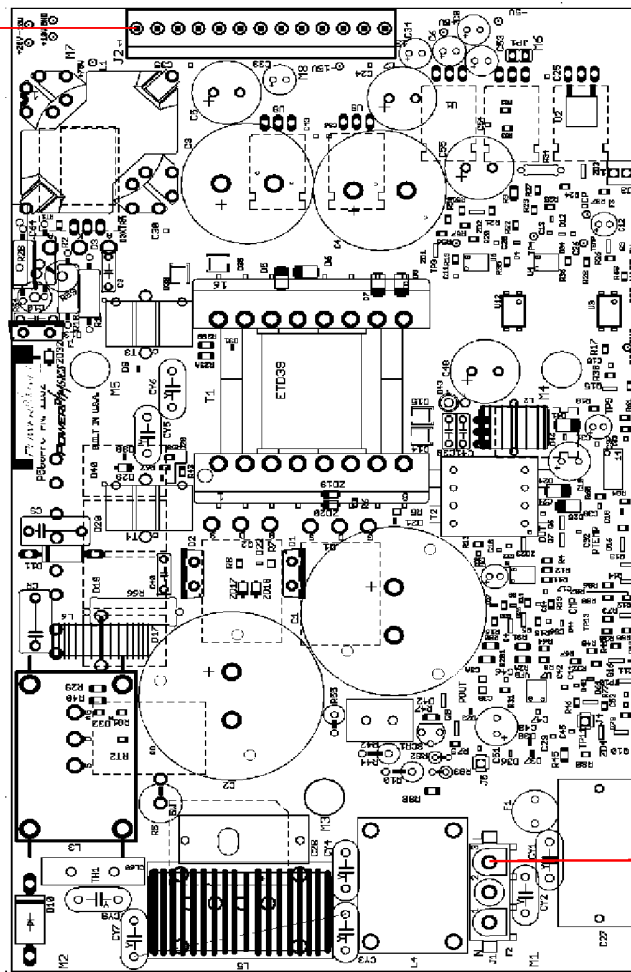


P-1000-115 Pinout

DC POWER OUT J2

- Pin 1: Vbus 115Vdc
- Pin 2: Vbus 115Vdc
- Pin 3: Ground
- Pin 4: Ground
- Pin 5: +15Vdc
- Pin 6: -15Vdc
- Pin 7: +5Vdc
- Pin 8: -5Vdc
- Pin 9: +15Vdc
- Pin 10: -15Vdc
- Pin 11: Ground
- Pin 12: Ground
- Pin 13: +5Vdc



AC Power J1

- Pin 3 Line
- Pin 2 Ground
- Pin 1 Neutral