

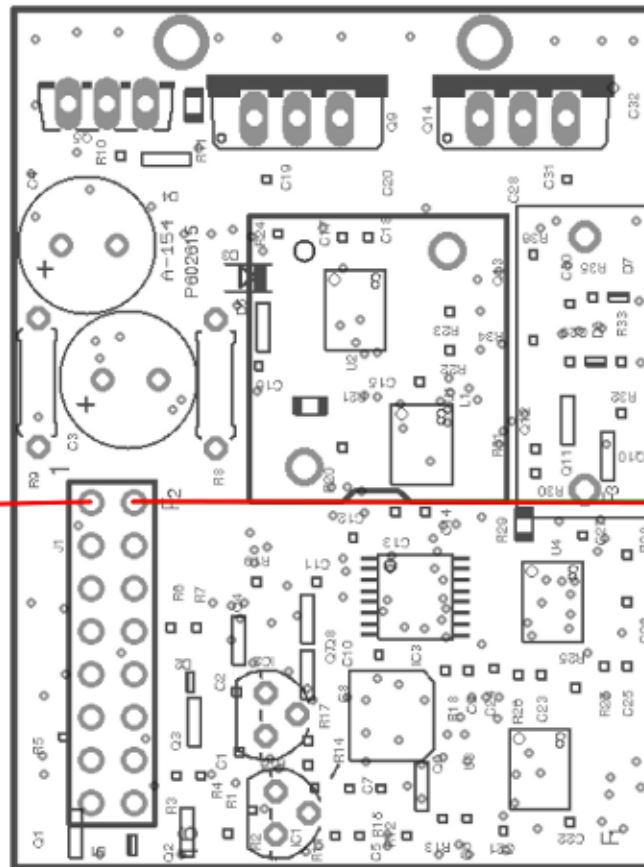
## A-154 Amplifier Pinout

### J1 Odd Pins

- Pin 1: Output
- Pin 3: Ground
- Pin 5: +Vbus (+25 to 43 Vdc)
- Pin 7: + 12 Vdc
- Pin 9: Current Monitor
- Pin 11: Temp Monitor
- Pin 13: Audio Input
- Pin 15: Ground

### J1 Even Pins

- Pin 2: Output
- Pin 4: Ground
- Pin 6: - Vbus
- Pin 8: -12 Vdc
- Pin 10: Sync
- Pin 12: Status
- Pin 14: Ground
- Pin 16: Disable



PowerPhysics, Inc.

877 Production Place, Newport Beach, CA 92663

949-371-6202

[www.powerphysics.com](http://www.powerphysics.com)